

ESWT- Kliniske implikationer

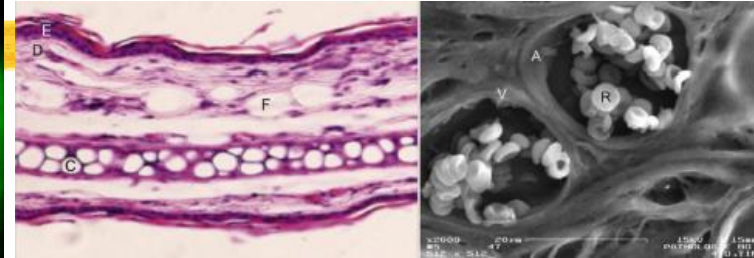
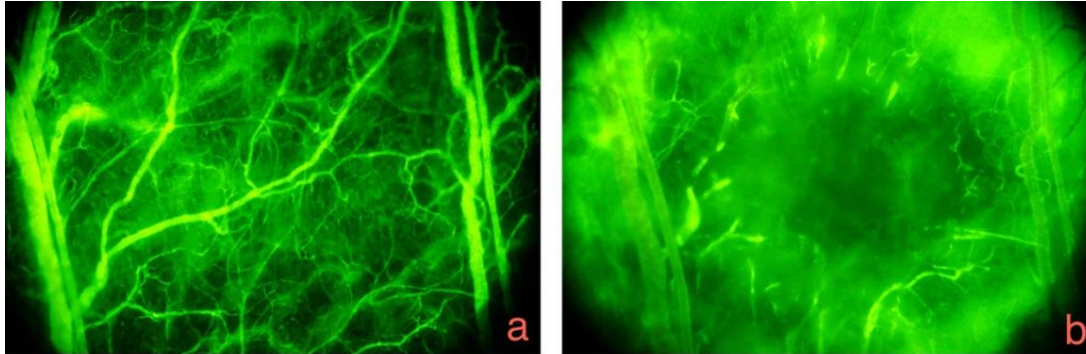


Anvendelse af ESWT i urologien:

Erektile dysfunktion

Peter Lyngdorf

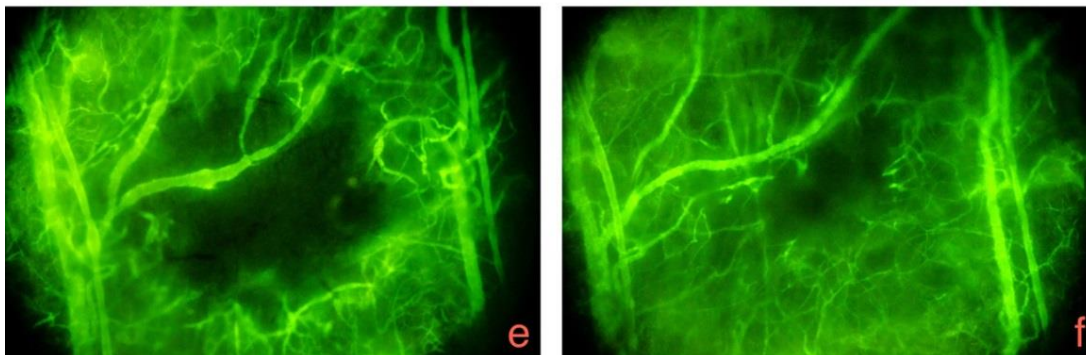
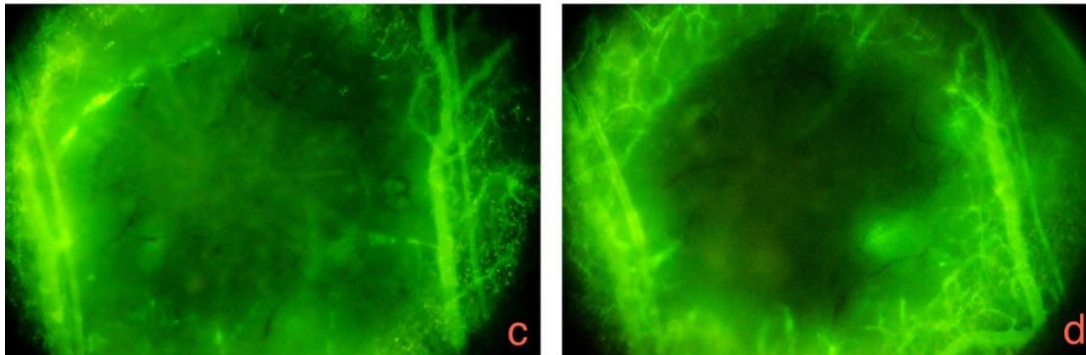
Results of the Second Animal Study



Histology and electron microscopy

Stained non-perfused area as parameter for angiogenesis:

- a) before vascular dysfunction
- b) immediately after dysfunction as well as after
- c) first ESWT,
- d) second ESWT
- e) third ESWT
- f) after follow up within two weeks.



Can Low-Intensity Extracorporeal Shockwave Therapy Improve Erectile Function? A 6-Month Follow-up Pilot Study in Patients with Organic Erectile Dysfunction.

Yoram Vardi et al.

Eur Urol 2010;58:243.

Low-Intensity Extracorporeal Shock Wave Therapy—A Novel Effective Treatment for Erectile Dysfunction in Severe ED Patients Who Respond Poorly to PDE5 Inhibitor Therapy.

Ilan Gruenwald, MD, Boaz Appel, MD, and Yoram Vardi, MD

JSM 2012;9:259.

Does Low Intensity Extracorporeal Shock Wave Therapy Have a Physiological Effect on Erectile Function? Short-Term Results of a Randomized, Double-Blind, Sham Controlled Study

Yoram Vardi,^{*},[†] Boaz Appel, Amichai Kilchevsky and Ilan Gruenwald. *J Urol 2012;187:1769.*



ESWT- Kliniske implikationer



**Er behandling med ESWT
effektiv?**

Energi kilde

Styrke

Antal behandlinger

Antal shocks pr. behandling

Frekvens

Treatment Experience – Long Protocol



Data from single study, Denmark Dr. Lyngdorf; ISMST (2014)

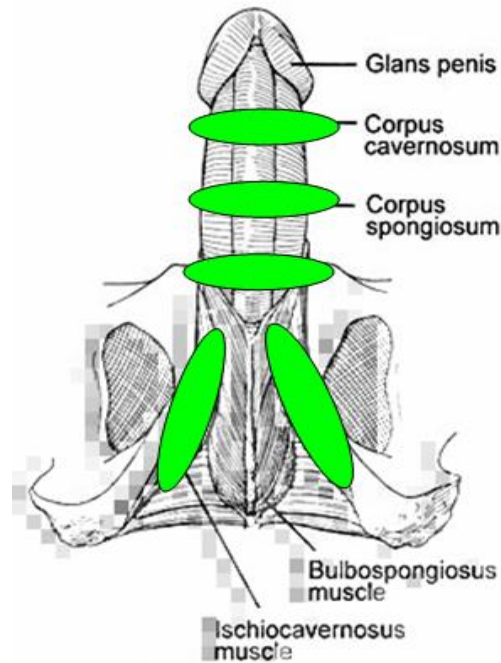


First Protocol (2010);

Methodology (Electrohydraulic System)



Shaft



Crura

Apply 300 shocks at five locations across the shaft and crura a total of 1500 shocks per session (15 min). Use generous amount of coupling ultrasound gel.

ESWT- Kliniske implikationer



Hvordan kommer vi videre?

Nye spørgsmål



Virkningsmekanisme

Hvilken applikator?

Protokol:

Antal behandling

Antal shock pr. beh.

Energi

ESWT- Kliniske implikationer



Antal shock pr. behandling: 2.000

Antal behandlinger: 6-12

Antal beh. pr. uge: 2

Energi: 0,08 – 0,11 mJ/mm²

Nye spørgsmål



Hvad skal måles?

Parametre (IIEF, EHS etc.)

Udvælgelse af patienter

Forebyggende behandling